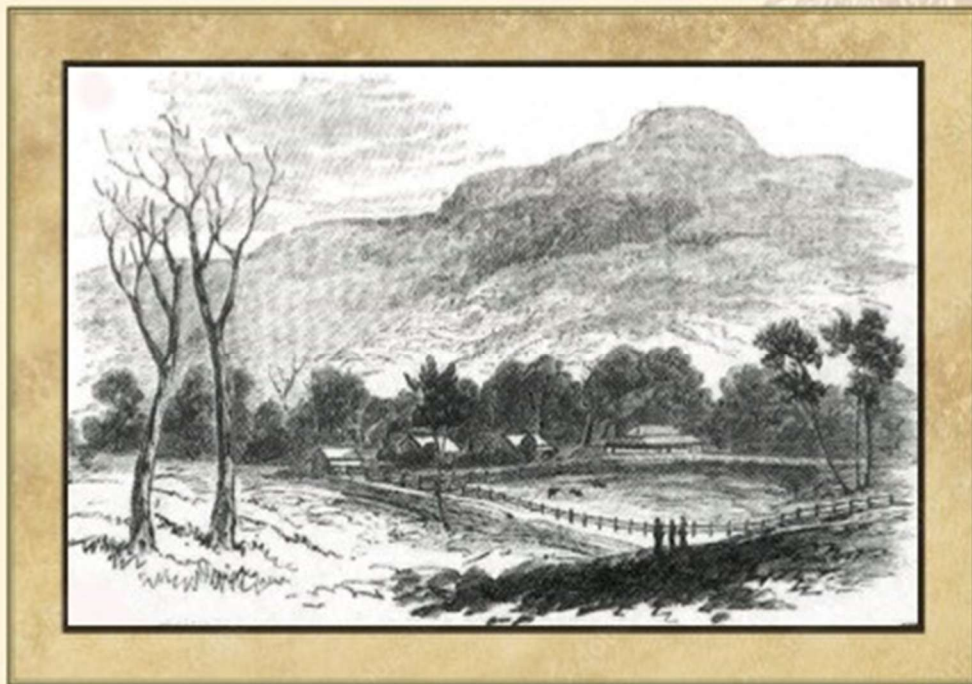


# WANGALPONG *to* MOUNT TAMBORINE

VOLUME I

*The Moreton Bay Story*



KAREN ROSSER

---

Price \$50 (plus postage)

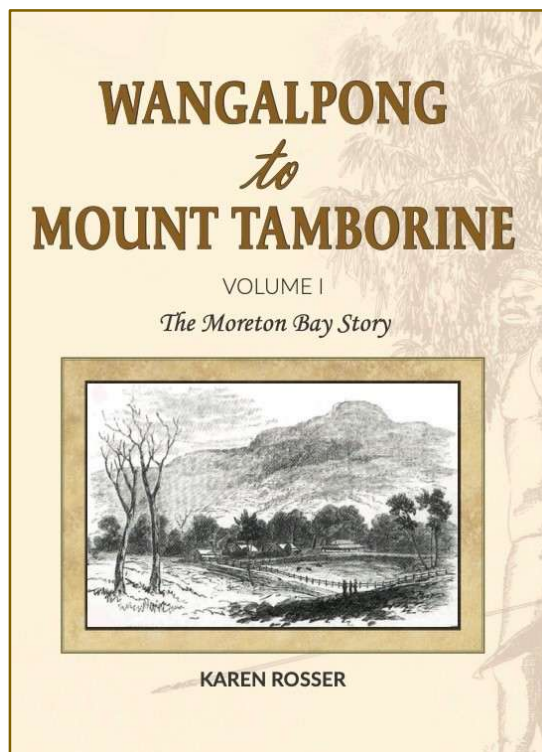
---

# Wangalpong *to* Mount Tamborine

VOLUME 1  
*The Moreton Bay Story*

Written by  
**KAREN ROSSER**

Karen Rosser is a fourth-generation Tamborine Mountain local who grew up on a dairy farm on the South End. Her grandfather, Stan Rosser, was just five years old when his family came to The Mountain in 1896, and her father Allan Rosser, has lived on the mountain for all of his 100 years. Her book is the product of 9 years of meticulous research with a further volume still in progress.

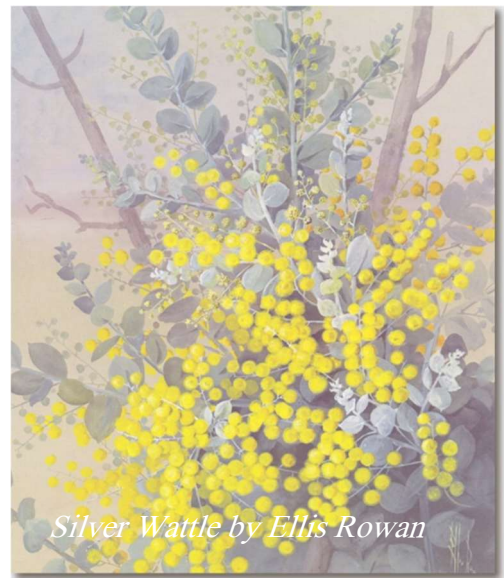


*Karen's passion for her subject is clear on every page. Her writing style is unique, and it gives The Mountain a personality. This is the way history should be taught, not with bare dates, places, and names, but as a flowing documentary that takes us on a fascinating journey of discovery and invites us to think about our history in a new and interesting way.*

Nola Fulwood, Former Archivist and Manager,  
Public Access, (1990-2003) Queensland State  
Archives

Karen's book is available for purchase from our society,  
\$50.00 (postage TBA). Contact us by email  
[info@logariverfh.org.au](mailto:info@logariverfh.org.au) or by phone 3208 3993

*Wonglepong, Wanglepong, Wangalpong, Wangoolpong -  
so many spellings of this name,  
to find out why Karen chose Wangalpong, you will have to  
read the book!*



A quick peek at a few pages:  
page 72 preview....

Wangalpong to Mount Tamborine – Volume 1

## The Surveyors: Dixon, Warner and Stapylton

1838–1842

### *Introducing Robert Dixon*

Robert Dixon is no stranger to the Australian bush. Like other early surveyors, Dixon has walked, ridden and camped in more unexplored terrain than most of the explorers. If the story of that small band of pioneer surveyors who braved the elements to chart and plot the Australian countryside could be fully told, it would possibly be a saga of courage and endurance without equal in Australian history.<sup>180</sup>

Surveying is an art<sup>181</sup> and, as for any artist, it is a surveyor's inherent qualities that distinguish the very talented. Early Australian surveyors regularly spent months working in remote areas, and their survival depended on bushcraft, horsemanship and physical endurance. Without 4WD vehicles, satellite phones or modern navigational aids, surveyors relied upon their knowledge of mathematics and astronomy to determine their position, for there was no map until the surveyor had explored the ranges and traced<sup>182</sup> the rivers.

In September 1827, Surveyor General John Oxley put Robert Dixon to the test, assigning him the task of surveying the rugged Burratorang Valley, south-west of Sydney. Although Dixon had only one year of experience behind him, Oxley had great confidence in the young man, but warned Dixon 'to take care as the valley of the Burratorang is known to be extremely narrow and hemmed in by impenetrable rocky ranges.'<sup>183</sup>

Oxley's warning proved all too true for, two months later, 27-year-old Dixon lay severely injured within those impenetrable rocky ranges, after being thrown from his horse. Miles from help, his horse and two bullocks dead, Dixon felt the same fate soon awaited him. He

180 From Louis Cranfield, 'The Life of Robert Dixon', *Royal Australian Historical Society Journal*, Vol 54 Part 4 (December 1968), p. 387.

181 From Bill Kitson and Judith McKay, *Surveying Queensland 1839 – 1945, A Pictorial History*, Queensland Department of Natural Resources and Water and the Queensland Museum, 2006, p. 5.

182 A trace is a survey to ascertain and accurately plot the course of a river or creek, a track or a road.

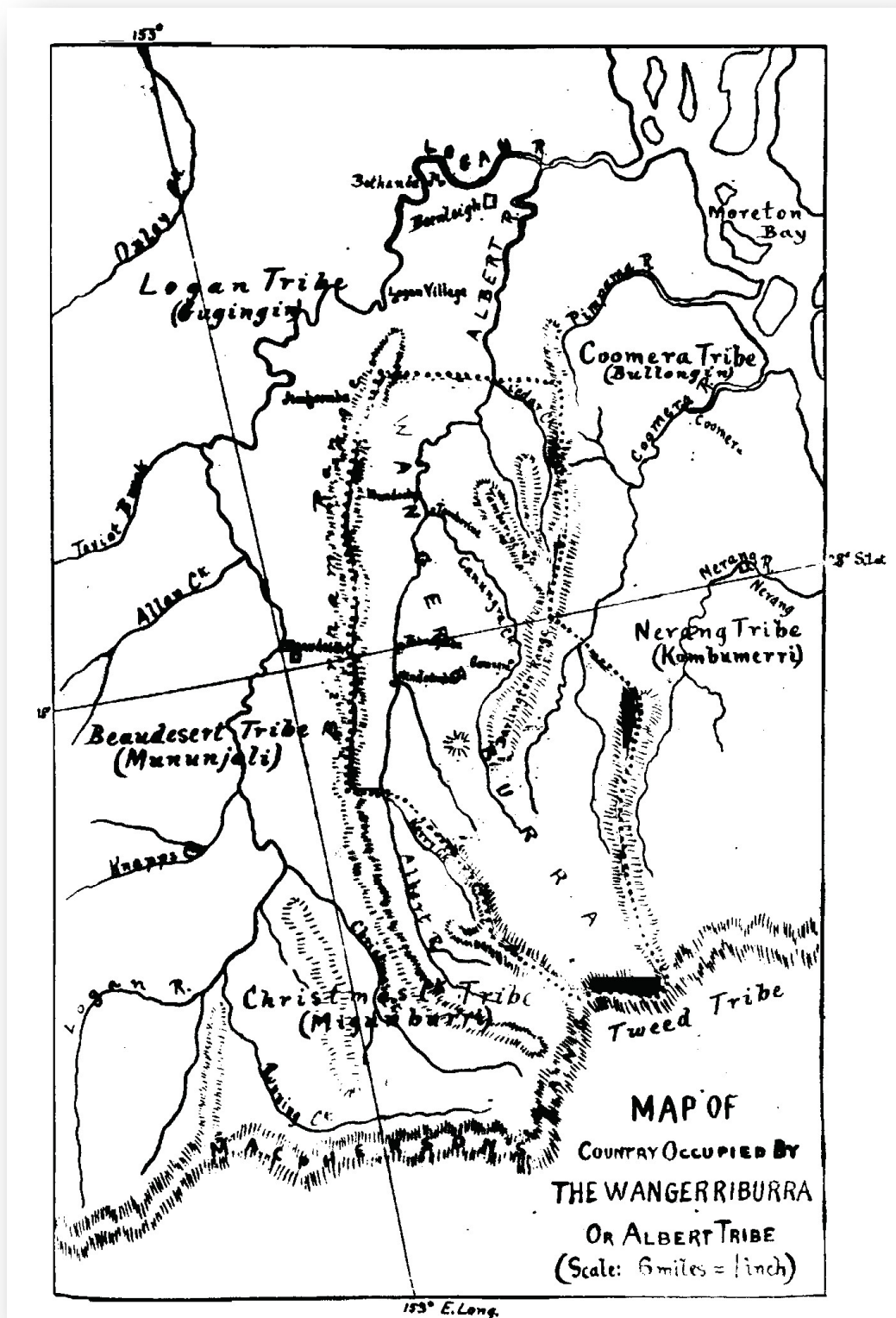
183 From Louis Cranfield, 'The Life of Robert Dixon', *Royal Australian Historical Society Journal*, Vol 54 Part 4 (December 1968), p. 387.

Figure 68: Sales poster for the Surfers Paradise Estate, 1917

Figure 68: Print advertisement for Thor Jensen's Surfers Paradise Estate, offered for sale by Arthur Blackwood in 1917

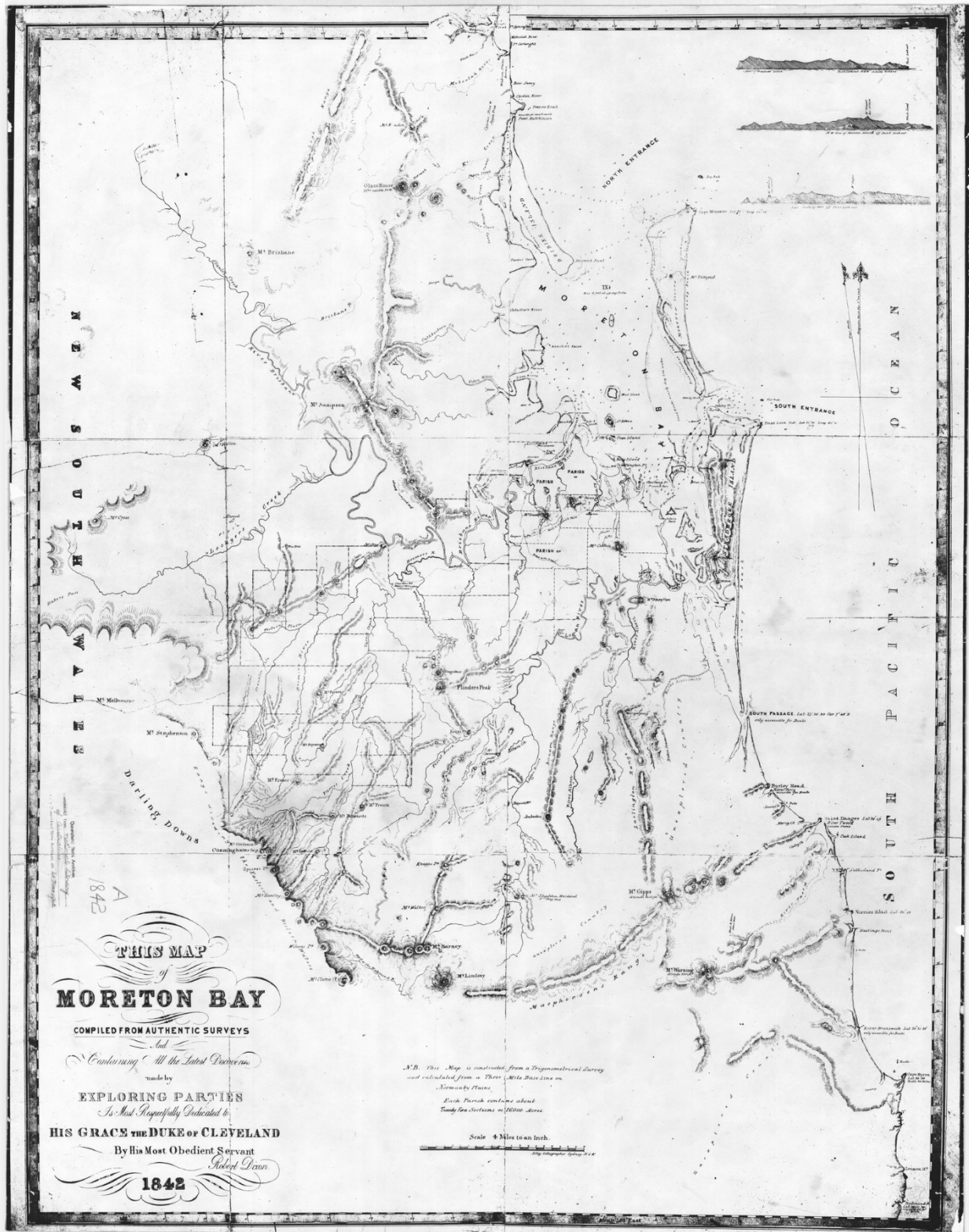
Note: In 1877, Johann Meyer purchased 80 acres behind today's Main Beach to grow corn and potatoes before changing over to sugar, even building a small sugar mill. The ever increasing popularity of the Southport area did not go unnoticed by Meyer and, in 1885, he subdivided and developed 'Main Beach Estate.' The Hon. John Appel purchased twelve lots and built *Sea Glint*. The hotel that Meyer built in 1887, at the river end of today's Cavill Avenue, burnt down in 1893. Meyer rebuilt the hotel at a site on the corner of today's Gold Coast Highway and Cavill Avenue, but the operation ceased, following his death in 1901. The site was subsequently purchased by Jim Cavill, who built the Surfers Paradise Hotel in 1925, taking advantage of the new road access across the Jubilee Bridge, and Thor Jensen's very apt name. Today it is known as the Cavill Hotel, leaving the name to the locality, just as Jensen intended in 1917.

Source: Museum of Land, Mapping and Surveying, acc. No. PE 384, courtesy of the Jensen Bowers Group



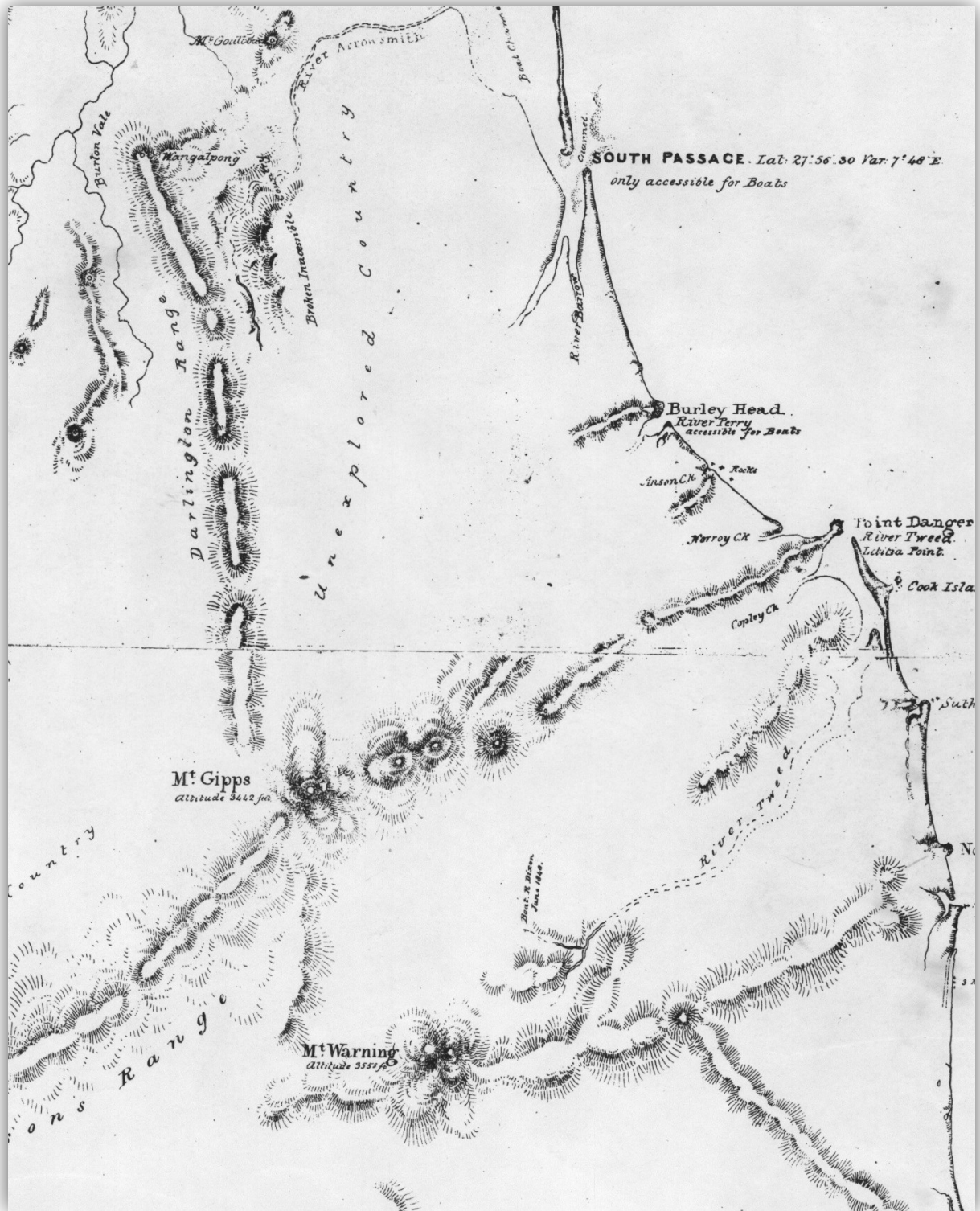
This map is taken from the Annual Report of the Chief Protector of Aborigines for the year 1913, Queensland. Appendix: Grammar, Vocabulary, and Notes of the Wangeriburra Tribe, possibly from the work of John Allen (Bullumm) and John Lane. Map available on <https://commons.wikimedia.com>

Surveyor Robert Dixon's map of Moreton Bay published in 1842



Queensland State Archives ITM634892, Contact print of map of Moreton District, New South Wales compiled by Robert Dixon from a trigonometrical survey. 4 miles to the inch. Liley, Lithographer, Sydney.

Robert Dixon's map – detail showing Wangalpong





The book launch on Mount Tamborine, Karen Rosser, Jacki Ferro (publisher).



Allan Rosser (proud Dad) getting a signed book from Karen,

The book presentation at the Queensland State Archives in 2023.



Jacki Ferro, Karen Monro, Kaye Nardella, Nola Fulwood

